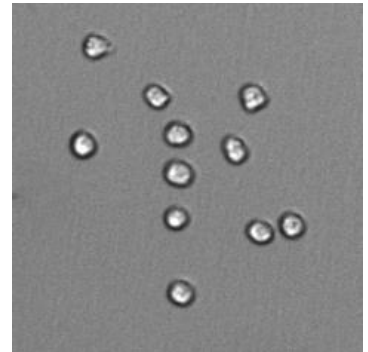


Suspension Cell Count

General Purpose

This application gives you a quick overview of the cell density in your sample. It is useful for preparation of a limited dilution for e.g. single cell cloning. It can be used as an endpoint determination to e.g. split cells or as a time charted growth monitoring for e.g. media optimization. No staining is required.



Short Note
SN-B001-XVII-04

Result Table

• <i>Living Cells</i>	<i>Number of living cells</i>
• <i>TC-BF</i>	<i>Total Count (Number of cells listed per well)</i>
• <i>Viability</i>	<i>Percentage of viable cells in your sample</i>
• <i>CD</i>	<i>Cell Density [#/ml]</i>
• <i>Avg Cell Size</i>	<i>Average of the Cell Size [μm^2]</i>
• <i>Final Dilution</i>	<i>Dilution factor</i>
• <i>Volume per Well</i>	<i>Sample Volume per well</i>

Example

This example shows a typical result image of a suspension cell count analysis.

