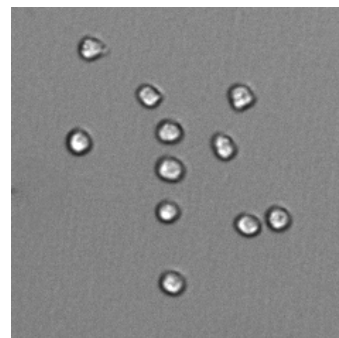


Suspension Cell Count

GENERAL PURPOSE

This application gives you a quick overview of the cell density in your sample. It is useful for preparation of a limited dilution for e.g. single cell cloning. It can be used as an endpoint determination to e.g. split cells or as a time charted growth monitoring for e.g. media optimization. No staining is required.



RESULT TABLE

Living Cells	Number of living cells
TC-BF	Number of detected cells in the brightfield channel per well
CD	Cell Density [#/ml]
Viability	Percentage of viable cells per well
Avg Cell Size	Average size of all detected cells in μm^2 per well
Dilution	Dilution factor used to prepare the sample, entered in the "Prepare" tab
Volume	Used volume per well in μL , entered in the "Prepare" tab
Sample Volume	Calculated "undiluted" volume of the sample in μL per well

EXAMPLE

This example shows a typical result image of a suspension cell count analysis.

