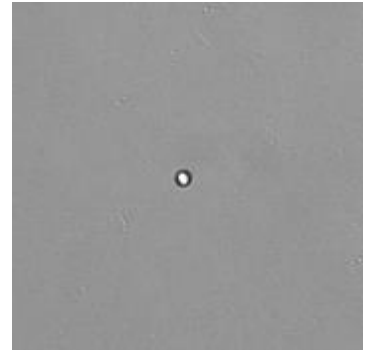


## Single Cell Cloning

### General Purpose

This application was developed to support the production of monoclonal cell lines. It represents an indispensable tool to verify the monoclonality of your cell line and to monitor the growth of your clone. Features like 'time resolved back tracking' and a filter option to exclude undesired wells will guaranty a high level of security combined with a reduced amount of data to be stored.



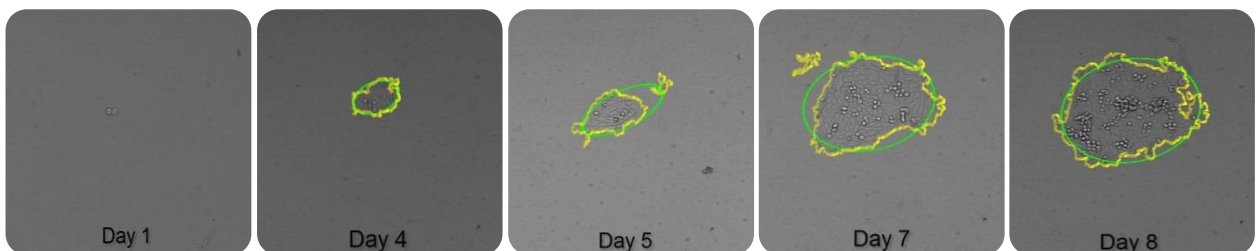
Short Note  
SN-B002-XVII-04

### Read-Out Data

- *Colony Count*                      *Number of separate Colonies*
- *Cell Confluence*                    *Percentage of Cell Area on Evaluated Area*
- *Area of Colonies*                   *Covered Area of Colonies*
- *Cell Area*                            *Area covered with cells*

### Example

This example shows a typical Single Cell Cloning experiment filtered by the property "Colony Count" to reduce the data amount to a minimum.



←  
Image based and time resolved backtracking of your colony to prove a single cell.