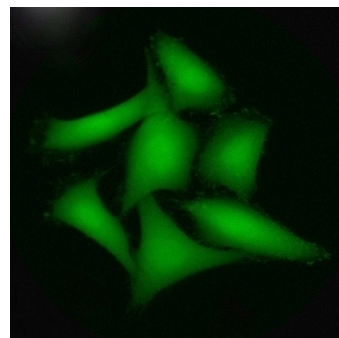


Fluorescent Area (1F)

GENERAL PURPOSE

The Fluorescent Area (1F) image analysis tool is used to monitor the area covered by cells using one fluorescence channel only. A typical application is to check for toxicity on a dedicated drug. The image analysis will determine the area covered by stained cells and calculates the ratio to the whole measured area. Our systems offer the possibility to measure the entire well or a run of your assay in a random way by selecting just a fraction of the total well area.



RESULT TABLE

Cell Area	Area covered with fluorescent cells in mm ²
Cell Area Count	Number of separate fluorescent cell clusters
Cell Confluence	Percentage of fluorescent cell area on evaluated area
Avg Fluorescence Intensity BC	Average fluorescence intensity over background level per well

EXAMPLE

This example displays a cell line that is used to determine the concentration of a drug applied in a medical treatment. The toxicity is determined by the covered area of fluorescence labeled cells being picked by a threshold.

