

Quick Guide – mAbregation-Kit Staining Antibody Aggregates

Contents

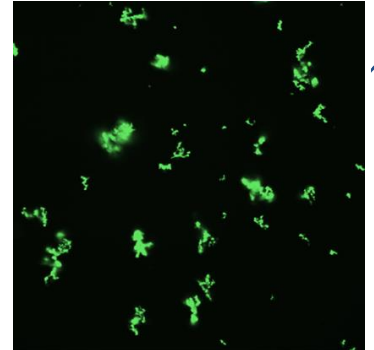
1x 4 mL mAbregation ready-to-use staining solution

Protocol for 96-well Plates

Example for 200 μ L medium/cell suspension per well:

1. Pipet 20 μ L staining solution into each well
2. Adjust the pipette to a larger volume and mix well but gently
3. Centrifuge the plate 1 min at 100 x g
4. Measure plate (UV excitation, green emission)

Cell Suspension / Well [μ L]	Needed Staining Solution / Well [μ L]
200	20
100	10
50	5
40	4



Quick Guide
QG-B126-XVII-03

