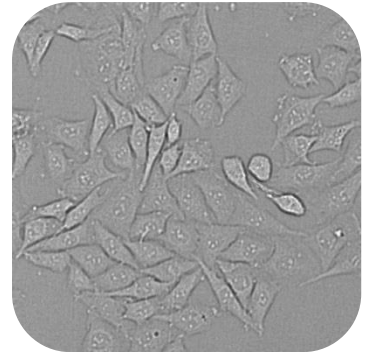


## Confluence

### General Purpose

The Confluence image analysis tool is used to monitor the area covered by cells using one brightfield channel only. It can be used as an endpoint determination to e.g. split cells or as a time charted growth monitoring for e.g. media optimization. No staining is required. Our systems offer the possibility to measure the entire well or run the assay in a statistic way by selecting just a fraction of the total well area.



Short Note  
SN-B0-00-XV-02

### Result Table

• <b>Cell Confluence</b>	<i>Percentage of Cell Area on Evaluated Area</i>
• <b>Cell Area</b>	<i>Area covered with cells</i>
• <b>Cell Area Count</b>	<i>Number of separate cell clusters</i>
• <b>Process Duration</b>	<i>Duration of image analysis [ms]</i>
• <b>Processed Area</b>	<i>Percentage ratio of Evaluated Area on entire well area</i>
• <b>Evaluated Area</b>	<i>Total evaluated area</i>

### Example

This example displays a gene-knockout cell line treated with a drug to enable selection pressure. It is used to figure out the best way of transfection and to generate a stabile cell line.

